

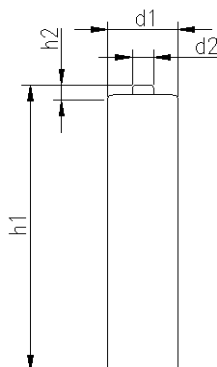
		Conditions	
<b>cell type:</b>		NiMH	
<b>cell size:</b>		AAA	
<b>nominal voltage:</b>	1.2	V	
<b>max. charge voltage:</b>	1.5	V	at standard charge (0.1C / 20°C)
<b>capacity</b>			
nominal:	550	mAh	discharge at 0.2C
minimum:	550	mAh	discharge at 0.2C
	500	mAh	discharge at 1C
			1.0V end discharge voltage
			ta: 20°C
<b>max. continuous discharge current:</b>	1650	mA	ta: 0...45°C
<b>charge</b>			
standard charge:	55	mA	14....16hrs
quick charge:	170	mA	4hrs
fast charge:	550	mA	1.1hrs
recommended charge termination control parameters:	0...5	mV	- ΔV (-deltaV)
	0.8...1	°C	temperature rise per minute
	45...50	°C	TCO (temperature cut off)
trickle charge current:	5...15	mA	(recommended)
continuous overcharge: (less than 1 year)	≤ 55	mA	no conspicuous deformation no leakage
<b>internal resistance:</b> (impedance)	≤ 70	mΩ	at 1KHz battery fully charged
<b>life expectancy:</b>	≥ 500	cycles	acc. IEC standard
<b>self discharge</b>			
charge retention:	≥ 75	%	after 12 months storage at 20°C
<b>initial capacity:</b>	≥ 400	mAh	within 30 days after delivery discharge at 0.2C
<b>ambient temperature range:</b>	0...45	°C	standard charge
	10...40	°C	fast charge
	- 20...65	°C	discharge
	- 20...50	°C	storage (≤3months)
	- 20...40	°C	storage (≤6months)
	- 20...30	°C	storage (≤24months)

QCT1: 20/500/50  
QCT2: 30/450/55

**mechanical specifications**

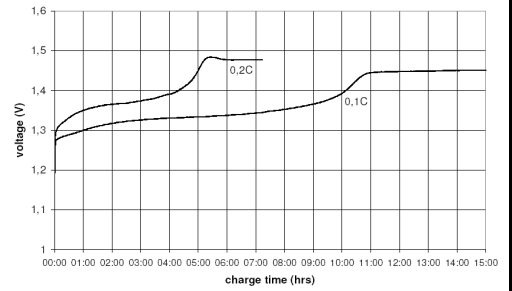
cell dimensions

diameter d1:		10.3 - 0.7	mm
diameter d2:	max.	3.8	mm
height h1:		44.5 - 1.5	mm
height h2:	min.	0.8	mm
weight:		12.5 ± 2	g

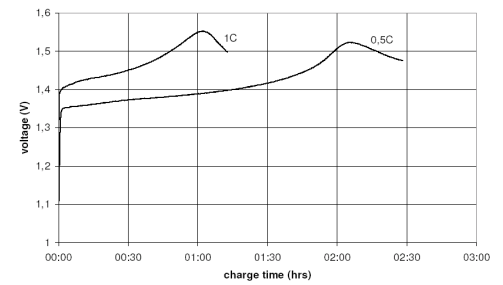


**Diagrams**

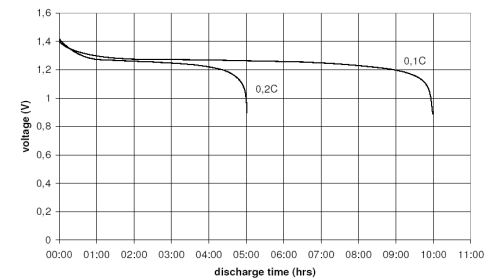
standard charge



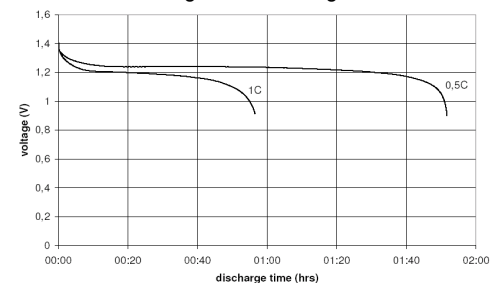
fast charge



low rate discharge



high rate discharge



	<b>ANSMANN Specifications for model:</b>	<b>NiMH Battery</b>
		<b>AAA - 550mAh low self discharge</b>
	data sheet no. / part no.	
	supplier no.	704271
	author / date	TG / 31.07.2018